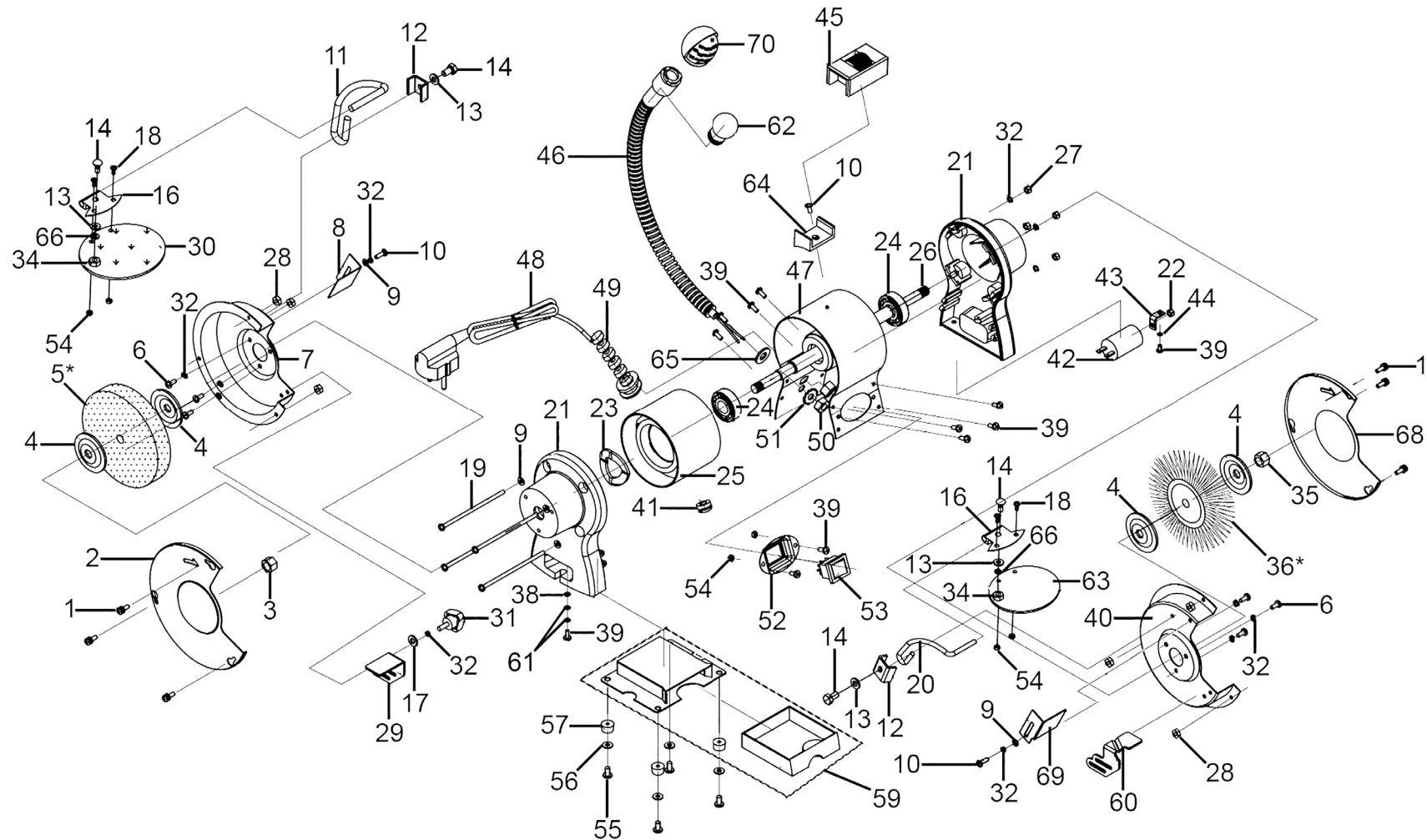




Parts Information:
Bench Grinder Ø150mm & Wire Wheel Combination with Work Light
250W/230V
Model No: BG150XWL



NOTE: It is our policy to continually improve products and as such we reserve the right to alter data, specifications and component parts without prior notice.

There may be alternative versions of this product, please contact us should you require this information.

IMPORTANT: No liability is accepted for incorrect use of product. Spare parts must be fitted by a competent person

WARRANTY: Guarantee is 12 months from purchase date, proof of which will be required for any claim.

Sealey Group, Kempson Way, Suffolk Business Park, Bury St Edmunds, Suffolk. IP32 7AR



01284 757500



sales@sealey.co.uk



www.sealey.co.uk



Parts Information:
**Bench Grinder Ø150mm & Wire Wheel
 Combination with Work Light 250W/230V
 Model No: BG150XWL**

Item	Part No.	Description
1	MSP518.S	Machine Screw Pan Head Phillips M5 x 18mm
2	BG150WL.02	Guard Cover, Left
3	BG150XD/99-06	Hex Nut M12 (Left hand Thread)
4	BG150WL.04	Wheel Flange
5*	BG150/15	Grinding Stone Ø150 x 20mm 32(13)Mm Bore A60P Fine (Please See Catalogue)
5*	BG150/16	Grinding Stone Ø150 x 20mm 32(13)Mm Bore A36Q Coarse (Please See Catalogue)
6	MSP510.SB	Machine Screw Pan Head Phillips M5 x 10mm Black
7	BG150WL.07	Inner Guard Cover, Left
8	BG150WL.08	Spark Deflector, Left
9	FWM5.SB	Flat Washer M5 Black
10	MSP58.SB	Machine Screw Pan Head Phillips M5 x 8mm Black
11	BG150WL.11	Left Eyeshield Mount Rod
12	BG150WL.12	Bracket
13	FWM6.SB	Flat Washer M6 Black
14	BG200WL.15	Hex Bolt M6 x 14mm
16	BG150WL.16	Eyeshield Plate
17	BG150WL.17	Big Flat Washer 5mm
18	DAS151.14	Screw M4 x 10mm
19	MSP5122.S	Machine Screw Pan Head Phillips M5 x 122mm
20	BG150WL.20	Eyeshield Mount Rod, Right
21	BG150WL.21	End Cap
22	SN8.S	Steel Nut M8
23	BG150WL.23	Wavy Washer Ø35mm
24	B/6202-2RS	Bearing 6202-2RS
25	BG150WL.25	Stator
26	BG150WL.26	Rotor
27	SN5.SB	Steel Nut M5 Black
28	NLN5.S	Nyloc Nut M5
29	BG150WL.29	Work Rest, Left
30	BG150WL.30	Eyeshield
31	BG150WL.31	Work Rest Lock Knob
32	SWM5.SB	Spring Washer M5 Black
34	SN6.S	Steel Nut M6

Item	Part No.	Description
35	SN12.S	Steel Nut M12
36*	BG150/WW1	Wire Wheel Ø150 x 13mm Ø13mm Bore Narrow (Please See Catalogue)
38	BG150WL.38	Toothed Locking Washer 4mm
39	MSP410.SB	Machine Screw Pan Head Phillips M4 x 10mm Black
40	BG150WL.40	Right Guard Inner Cover
41	BG150WL.41	Cord Bushing
42	BG150WL.42	Capacitor 4µF 450V 50/60Hz CBB60
43	BG150WL.43	Capacitor Stand
44	FWM4.S	Flat Washer M4
45	BG150WL.45	Wheel Dressing Tool
46	BG150WL.46	Lamp Assembly
47	BG150WL.47	Motor Housing
48	MC3CX0.75	Mains Cable Black, 3 Core, 0.75mm ²
49	BG150WL.49	Strain Relief (c/w Lock Nut M16)
50	EU1011	Nut M10 x 1mm
51	BG150WL.51	Toothed Locking Washer Ø10mm
52	BG150WL.52	Switch Plate
53	BG150WL.53	Switch
54	SN4.S	Steel Nut M4
55	MSP416.SB	Machine Screw Pan Head Phillips M4 x 16mm Black
56	BG150WL.56	Big Flat Washer 4mm
57	BG150WL.57	Rubber Foot
59	BG150WL.59	Base Plate Assembly (c/w Tray)
60	BG150WL.60	Right Movable Work Rest
61	FWM4.SB	Flat Washer M4 Black
62	BG150WL.62	Bulb
63	BG150WL.63	Magnified Eyeshield
64	BG150WL.64	Dressing Tool Base
65	BG150WL.65	Flat Washer 10mm
66	SWM6.SB	Spring Washer M6 Black
68	BG150WL.68	Guard Cover, Right
69	BG150WL.69	Spark Deflector, Right
70	BG150WL.70	Lamp (c/w Guard)

NOTE: It is our policy to continually improve products and as such we reserve the right to alter data, specifications and component parts without prior notice. There may be alternative versions of this product, please contact us should you require this information.

IMPORTANT: No liability is accepted for incorrect use of product. Spare parts must be fitted by a competent person

WARRANTY: Guarantee is 12 months from purchase date, proof of which will be required for any claim.

Sealey Group, Kempson Way, Suffolk Business Park, Bury St Edmunds, Suffolk. IP32 7AR



01284 757500



sales@sealey.co.uk



www.sealey.co.uk